



Via Mobility Services  
2855 N. 63rd Street | Boulder, Colorado 80301  
[www.viacolorado.org](http://www.viacolorado.org) | 303.447.2848



A Participating Agency

Nonprofit Org.  
U.S. Postage  
PAID  
Boulder, CO  
Permit No. 543



*Mobility for Life*



Moving the Community Forward

2012 ANNUAL REPORT TO THE COMMUNITY

## Mobility and the adventure of a lifetime

Mobility makes its debut performance on the big screen in the animated movie *UP* (Disney/Pixar, 2009). By tying thousands of balloons to his home, 78-year-old Carl Fredricksen sets off to fulfill his lifelong dream to see the wilds of South America and to complete a promise to his late wife, his lifelong love. While Carl uses a rather unconventional mode of transportation, the once isolated and grumpy old man has a renewed sense of adventure and purpose, exhilarated by his freedom to move. Smiling broadly for the first time in years, he travels through the streets of the city and beyond. Mobility enabled Carl's new found sense of freedom, wonder and ability to re-claim control over his own life. And mobility allowed him the adventure of a lifetime.



The ability to move is a universal human need. Mobility is not a car or a bus – it's the feeling of freedom that comes from knowing you can move when and where you want.

### Enhancing mobility is Via's cause.

We have changed markedly in the last few years and our name, Via, reflects that change to illustrate that our role in the community is about ensuring mobility and how we can foster that ability to move in whatever way we can.

We talk about person-centered mobility on both individual and systems levels. On an individual level, our family of direct services facilitates connections to friends, family and community. On a systems level, we aim to move the community forward by working to ensure the availability of a range of transportation options that support the lives of people living with mobility limitations; by identifying gaps in transportation services; and by fostering creative solutions to transportation options. And by faithfully advocating for a range of mobility options to be available so that all people have the opportunity to experience that essential human need for movement, inclusion and for feeling connected to something larger than themselves.

It's not simply transportation now. It's about whatever option most suits an individual's mobility needs and it's about a community that commits to providing a range of options to keep all of its members mobile and connected.

We will continue to change to meet the mobility needs of our current and future populations. In the rapidly changing environment of innovative programs to enhance mobility, we will explore research-backed, effective and safe best practices, apply our three-plus decades of insight to evaluate the potential impact of these programs and bring the best to implementation. We will listen more and try to understand better the needs of our customers. We will guarantee financial sustainability as it ensures our future. All because of our ongoing desire to serve you, our community, better.

From daily errands to daily adventures, mobility is what gives people the opportunity to live their dreams, have a sense of purpose and find their own unique place in the community.

Mobility is not just part of a day, it is a part of life.







We envision a future where all people, regardless of age, health, disability, income or ethnicity have easy access to the mobility options they need to enhance their independence and quality of life.

## Our Mission

Our mission is to promote independence and self-sufficiency for people with limited mobility by providing caring, customer-focused transportation options.

We provide a variety of specialized transportation and mobility options that improve the quality of life for older adults, individuals with disabilities, and others with limited mobility in the many communities we serve.

## We believe...

- ◆ All people are entitled to live as independently as possible within their life circumstances.
- ◆ Freedom of movement is a basic human need in our society.
- ◆ Everybody counts, regardless of age, health, disability, income or ethnicity, and has a contribution to make to the community in which they live.

## We are guided by values...

- ◆ Integrity in all our business dealings
- ◆ Respect for individuals
- ◆ Teamwork and positive problem-solving
- ◆ Caring—for our customers, for our community and for each other

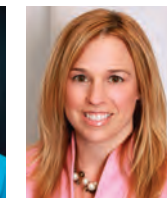
“Change is the law of life and those who look only to the past or present are certain to miss the future.” — John F. Kennedy

## Dear Friends,

We visibly and dramatically entered 2012 with a name change from Special Transit to Via Mobility Services. Via, meaning “by way of,” reflects the range of services we now provide, as well as our evolution into a one-call resource center for individuals and families facing mobility challenges. We are more than just a provider of rides, but an enabler of mobility.



LENNA KOTTKE



GRETCHEN WAHL

The advancement in new technologies allowed us to improve the efficiency and effectiveness of our paratransit program, thereby increasing capacity and availability of same-day rides without adding new vehicles. We strengthened our partnerships with other transportation providers and human service agencies, locally and regionally, to increase access to a wide range of options for our customers—always seeking to find the best transportation solution to meet individual needs.

The federal funding landscape also produced change. New transportation legislation resulted in a loss of funding for some rural service, and new allocation formulas will limit the amount of funding available to us to serve our target populations. Recognizing the need to reduce reliance on federal funding, we are developing a comprehensive, sustainable plan to increase philanthropic support from individuals, businesses and foundations.

Yes, change is the law of life. However, the changes we’ve made and continue to make will help ensure we do not miss the future. We intend to be here for people who need us for generations to come.

Lenna Kottke  
Executive Director

Gretchen Wahl  
President, Board of Directors

## 2012 — 2013 Board of Directors

**Gretchen Wahl**  
President 2012, Past President 2013  
Senior VP, Wells Fargo Bank

**Frank Bruno**  
Vice President 2012, President 2013  
VP for Administration, Western Disposal

**Bill Munson**  
Treasurer 2012  
VP & CFO, Boulder Community Hospital

**Frank Latino, Jr. CPA,**  
Treasurer 2013  
Latino and Associates

**Liz Abbott**  
Secretary 2012, Vice President 2013  
Boulder Public Library, retired

**Wendy Reynolds**  
Secretary 2013  
Branch President, Summit Bank & Trust

**Stacy Cornay**  
Member-at-Large 2012-2013  
Owner, Communications Concepts,  
Marketing and Public Relations

**Don Brown** Co-President, Secondary Interactive  
**Joan Campbell** Community Volunteer

**Tony Dworak** Attorney,  
Lyons, Gaddis, Kahn & Hall PC

**Forrest Fleming** Owner, Instant Imprints

**Suzanne Hoover** Career Volunteer

**Lenna Kottke** Executive Director, Via

**Ted Manning** Consultant, retired

**Jana Petersen** Administrative Services Director,  
Boulder County

**Peter Powers\*** Director of Business Development  
Longmont United Hospital

**Kati Pressman** Rider

**B. Scot Smith\*** The Colorado Group

**Sam Sussman** Co-Owner,  
8 Days A Week Imaging

\*New in 2013



## Impacting Lives

“I want you to know that Via has been nothing less than a life-saver for me! Sudden misfortune, bad health, a divorce or bankruptcy can turn a once prosperous and secure life into a nightmare. All of those things happened to me.

The courtesy and kindness of your staff, the friendliness, respect and constant encouragement they showed me—made all the difference in my life. I can’t adequately convey to you my sense of deep gratitude and joy.”

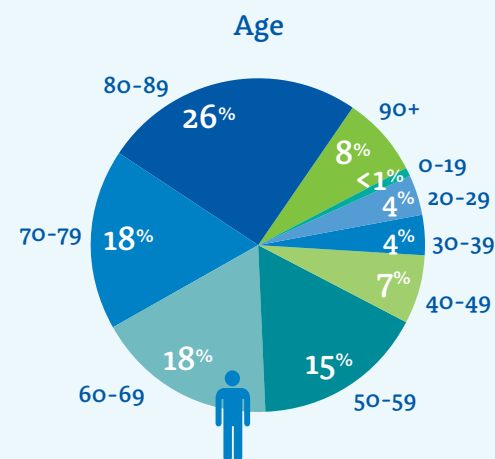
— Forrest C., age 69

## About our clients

### Income

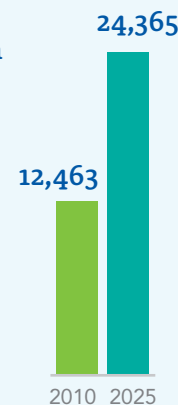
**38%** live at or below federal poverty level of \$11,170 annually

**57%** do not have the minimum income to meet The Elder Economic Security Index for Boulder County



### Population in service area

According to the 2010 Census, the population of older adults and people with disabilities in Via’s service area is expected to grow 95% between 2010 and 2025.

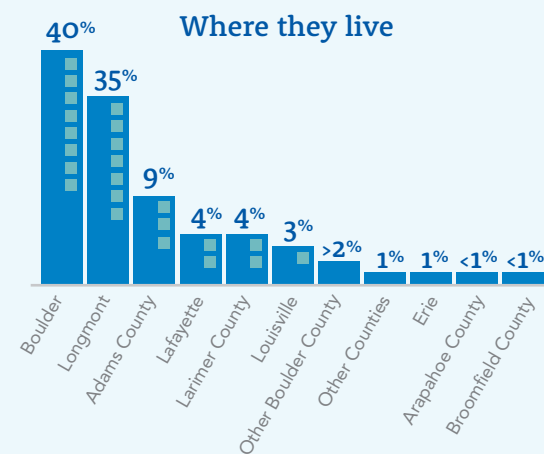


### Disability Status

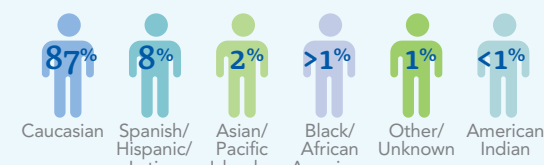
**60%** live with a disability or advanced frailty

**22%** live with a chronic disease or condition

**18%** report no disability or chronic condition



### Ethnicity



### Gender



## Awards

- ♦ **May:** Via received the coveted Beverly Foundation STAR Award for Excellence for providing innovative senior transportation services.
- ♦ **September:** The Colorado Association of Transit Agencies (CASTA) presented Via with the statewide Marketing Award for its comprehensive rebranding campaign using both traditional and contemporary media.
- ♦ **October:** Via Travel Trainer, Mary Dolores Young, was one of three Coloradoans awarded a Latino Fellowship from the Colorado Latino Age Wave, a project of the Latino Community Foundation of Colorado.



### Via Paratransit

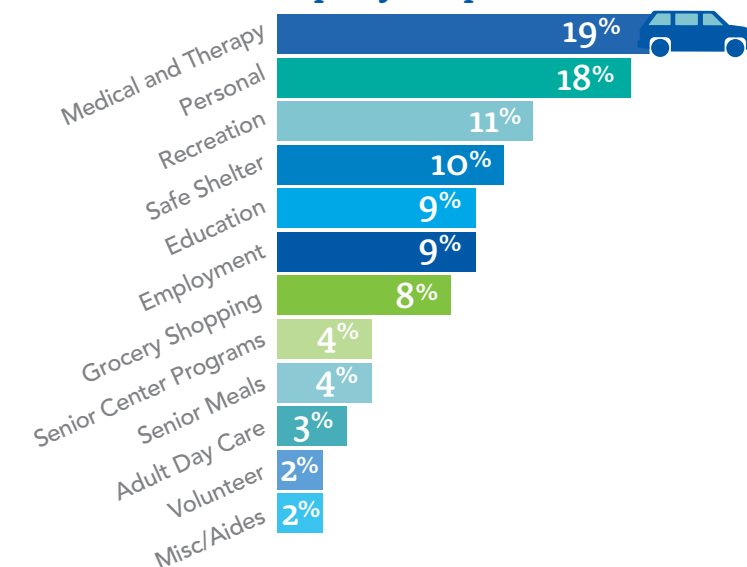
The paratransit program provided a total of 138,367 trips.

- 111,383 on-demand trips were provided and 2,273 older adults and people with disabilities were served.
- Via absorbed The Climb, a transportation program serving the mountain communities of Boulder County; 4,401 trips were provided.
- Partnering with Boulder County, Via operated summer shuttles to improve access to rural open space areas; 8,294 trips were provided.
- 32,963 trips were provided in the Longmont community.
- 14,289 trips were provided for individuals experiencing homelessness in order to secure safe shelter during the winter.
- 118,571 trips were provided in Boulder County.
- 26,362 trips were provided for medical or therapy purposes.
- 17,640 trips were provided to ensure access to food and nutrition programs.
- The average cost per trip was \$28.21.
- The volunteer driver collaboration with American Red Cross provided 1,825 trips and the Medical Mobility volunteer driver collaboration with Boulder County CareConnect provided 3,495 trips.
- 627,574 miles were traveled and 58,945 revenue hours were provided.

## IMPACT

The biennial Program Outcome Measurement Evaluation proved that 98% of riders agreed or strongly agreed our service helps them to be more self-sufficient and 97% agreed or strongly agreed we help them to be more independent.

### Trips by Purpose





# Helping Families

“My mom used your service for the last seven years of her life. You took her to church and to choir every week. She loved everyone at Via. It was so important for her to stay in touch with others and with her interests and you were instrumental in helping her do so.”

— Jean M.



## Travel Training Program

- 76 individuals were served in the comprehensive one-on-one mobility assessment and travel training program. Successful trainees used public transit for an average of 10 round trips per month.
- 7 *Transportation 101* classes were conducted
- 3 *Train the Trainer* seminars were conducted
- 15 *On The Move* group travel training classes were conducted with 274 participants.
- Via's Travel Training Program hosted the national Association of Travel Instruction Conference in August.
- Via extended its outreach to the Latino community; 26 Latino individuals successfully completed the one-on-one travel training program.

### IMPACT

The year-end Program Outcomes Measurement Evaluation showed that 93% of successful trainees agreed or strongly agreed that they felt more independent than before they received the training and 94% agreed or strongly agreed that they have more confidence in their ability to get to where they need to go as a result of the travel training.



## Mobility Options and Individual Travel Planning

- In 2012, Via realigned the mobility specialist program to serve as the point of intake for all new clients entering any of Via's programs, as well as providing transportation options information and referral.
- 865 individuals received intake or information and referral services
  - 494 had individual travel plans (ITP) developed.
  - 216 individuals received ITP's who did not use any of Via's services.

### IMPACT

Year-end evaluations indicated that more than 54% were complying with their individual travel plans.

## Safety

The safety of our passengers, drivers and the public continues to be our highest priority.

- Drivers in the four divisions drove almost 3.3 million miles and completed the year averaging 0.6 accidents per 100,000 miles driven.
- 133 drivers were recognized for driving at least 1,000 hours behind the wheel (or 500 hours for part-time employees) with no infractions and no preventable accidents.
- 34 drivers received Driver Safety Awards for maintaining a safe driving record for 5 to 10 years.
- 7 drivers received Driver Safety Awards for maintaining a safe driving record for 10 years or more.

### OUR STANDARD

Definition of an accident: Any time a vehicle comes in contact with anything other than the tires touching the ground resulting in property damage or injuries of any amount.

## Significant Organizational Achievements

- ♦ A total of 2,550 unduplicated individuals were served in the paratransit, travel training and mobility options programs and a total of 149,375 trips were provided or enabled.
- ♦ The organization officially changed its name to Via Mobility Services on January 1, 2012.
- ♦ The financial year ended with a 2.2 percent margin of operating revenue over expenses.
- ♦ The HOP, Call-n-Ride and Access-a-Ride contract services provided 1,108,253 passenger trips.
- ♦ Via achieved a safety record of 0.6 preventable accidents per 100,000 miles driven.



In August, Via presented the internationally acclaimed Young@Heart Chorus in Boulder's historic Chautauqua Auditorium for a benefit concert and capstone rebranding event. Close to 1,000 people attended, proving you are never too old to rock and roll.

Social Enterprise

Social enterprise in the nonprofit sector may be defined as “improving the effectiveness and sustainability of the organization by employing earned income contracts to achieve social objectives.”

As a nonprofit organization, Via ensures that all profits from the three earned income contracts are reinvested to enhance our mission services, to nurture the well-being of our organization, to reinforce our commitment to the communities we serve and to make our organization’s vision a reality.



The HOP

Total Passenger Trips 873,610

The HOP is the heart of Boulder’s Community Transit Network. The HOP is a high frequency circulator shuttle connecting the primary retail, social and educational centers in the city of Boulder, including the University of Colorado. The HOP is a fully funded contract with the City of Boulder, CU-Boulder and RTD.



Access-a-Ride

Access-a-Ride

Total Passenger Trips 99,758

Access-a-Ride is an on-demand paratransit program mandated by the Americans with Disabilities Act (ADA) and is provided throughout RTD’s (Regional Transportation District) fixed route service area. Riders on Access-a-Ride must be certified as having a disability that prohibits them from using the fixed route system. As the regional public transit provider, RTD is legally responsible to fund and ensure this service is available to eligible individuals.



Call-n-Ride

Call-n-Ride

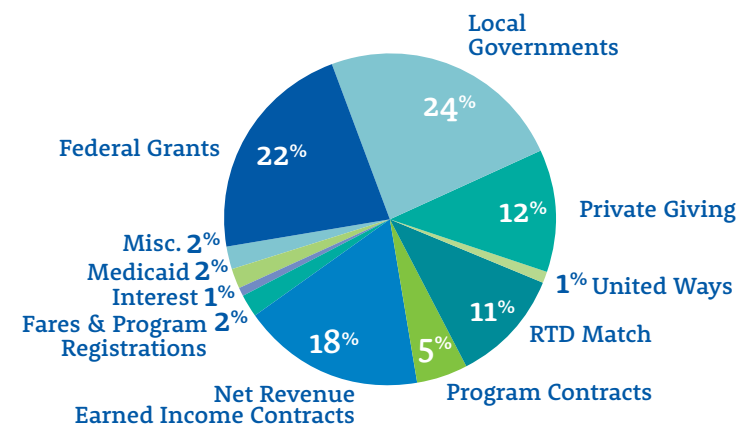
Total Passenger Trips 134,885

Call-n-Ride is a hybrid demand-responsive service established to serve residents living in specific communities where fixed routes are generally not cost effective. Designed to connect people to the RTD Park-n-Rides during peak hours, the service is open to anyone living or working within the defined geographic area for general transportation purposes. Via provides Call-n-Ride services in nine metro-Denver communities. This is a fully funded contract with RTD.

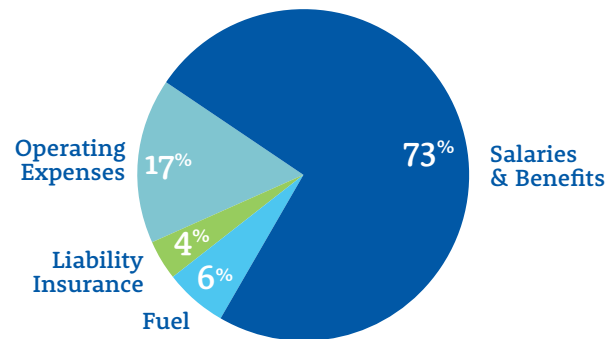
How We Support Our Mission Services

Paratransit, Travel Training and Mobility Options Programs

2012 Mission Services Revenue Categories



2012 Mission Services Expense Categories



Mission Services

Revenue:	\$3,434,380
Expenses:	\$4,180,175
Paratransit Program	3,896,188
Travel Training and Mobility Options	283,987
NET OPERATING LOSS	(\$745,795)

Earned Income Contracts

(HOP, Access-a-Ride, Call-n-Ride):	
Revenue:	\$10,158,179
Expenses:	\$9,117,380
NET REVENUE:	\$1,040,799

TOTAL AGENCY OPERATING REVENUE	\$13,592,559
TOTAL AGENCY OPERATING EXPENSES (excludes depreciation)	\$13,297,555
NET AGENCY OPERATING INCOME	\$295,004





# Via Mobility Services Statement of Financial Position

December 31, 2012 and 2011

Assets	2012	2011	Liabilities & Net Assets	2012	2011
Current assets:			Current & total liabilities:		
Cash & cash equivalents	\$1,095,795	\$1,733,953	Accounts payable, trade	\$257,705	\$183,790
Accounts receivable:			Accrued payroll and vacation	732,112	685,709
Trade	2,782,715	2,022,162	Payroll taxes & related liabilities	22,388	36,653
Other	171,386	368,308	Retainage payable	–	81,753
Pledges receivable	99,902	216,374	Unearned income	103,487	109,890
Deposits	22,203	32,088	<b>TOTAL LIABILITIES</b>	<b>\$1,115,692</b>	<b>\$1,016,042</b>
Prepaid expenses & other	303,399	202,795			
<b>TOTAL CURRENT ASSETS</b>	<b>\$4,475,400</b>	<b>\$4,575,680</b>	Net assets:		
			Unrestricted:		
Investments limited as to use	1,044,440	943,697	Operating	5,184,377	4,892,790
			Net investment in		
Property & equipment, at cost:			property & equipment	12,452,056	12,535,712
Facility	7,988,020	7,988,020	Board designated	921,656	831,901
Land	2,501,137	2,501,137	<b>TOTAL UNRESTRICTED</b>	<b>\$18,558,089</b>	<b>\$18,260,403</b>
Maintenance equipment	395,607	274,322	Temporarily restricted	187,762	415,273
Office furniture & equipment	1,148,268	1,026,601	Permanently restricted	122,784	111,796
Vehicles	5,142,770	4,842,636	<b>TOTAL NET ASSETS</b>	<b>\$18,868,635</b>	<b>\$18,787,472</b>
<b>SUBTOTAL</b>	<b>17,175,802</b>	<b>16,632,716</b>			
			<b>TOTAL LIABILITIES &amp; NET ASSETS</b>	<b>\$19,984,327</b>	<b>\$19,803,514</b>
Accumulated depreciation	4,723,746	4,097,004			
<b>TOTAL PROPERTY &amp; EQUIPMENT, NET</b>	<b>\$12,452,056</b>	<b>\$12,535,712</b>			
Other assets:					
Pledges receivable,					
net of current portion	–	98,040			
Inventory	73,019	67,737			
Investments	1,939,412	1,582,648			
<b>TOTAL OTHER ASSETS</b>	<b>\$2,012,431</b>	<b>\$1,748,425</b>			
<b>TOTAL ASSETS</b>	<b>\$19,984,327</b>	<b>\$19,803,514</b>			

# 2012 Financial Highlights

## Net Income

The Board of Directors directs staff to manage the organizational annual budget to realize a three percent margin of organizational revenue over expenses. In 2012, this margin was approximately 2.2 percent. Income over expenses is used to maintain required operating, facilities and vehicle reserves.

## Net Assets Released from Donor or Board Restrictions

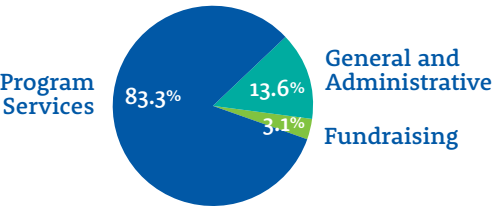
Net assets released from restrictions for the year ended December 31, 2012 represents funds released related to capital purchases of software, maintenance equipment, seven vehicles and rehabilitation costs for certain vehicles. Net assets released from restrictions for the year ended December 31, 2011 represents funds released related to remaining construction costs incurred by Via for the new headquarters facility as well as federal funds related to capital purchases of equipment.

## Restricted Stock Award

During 2009, Via received a gift of restricted shares of stock in a privately held company from the Margaret Cargill Foundation. The Foundation held the stock on behalf of Via and in 2011 exchanged the shares for stock in a publicly traded company and subsequently liquidated the acquired shares, providing a cash gift of approximately \$383,600, with the proceeds restricted to use for care of the elderly. The proceeds were recorded as unrestricted fundraising revenue during 2011 and approximately \$199,700 of the proceeds were used during 2011. Approximately \$132,555 was used during 2012 and Via will utilize the remaining \$51,355 in 2013.

## Fundraising Expenses

Fundraising expenses reflected in the financial statements include salary for employees as well as other supporting expenses related to functional responsibilities outside of fundraising activities, including communications, media and government relations, graphic design and website administration.



# Family Connections

“ My personal exposure to Via came through my mother. She was a fiercely independent person and though she appreciated our support, she did not want to impose. The ability to make appointments and to get to them without our assistance meant a great deal to her. She had her independence. ”

— Suzanne Hoover, Board Member

## Annual Fund Gifts

### Individuals

John Aaldering  
Liz and Dave Abbott  
Lois Abbott  
Bruce Abel  
Joan and Paul Acker  
Mark and Polly Addison  
Kathleen Ahl  
Irene Ahrens  
Claude and Dolores  
Albrighton  
Vera Albritton  
Laura Alexander  
Cynthia Allison  
Renate Alpert  
Judith Altstadt  
Penelope K. Amabile  
Audrey and Robert Ambler  
Giovanna and Bruno Ammann  
Andy and Annette Anderson  
Craig and Judith Anderson  
Mariette and Herman  
Anderson  
Anonymous (19)  
Karl Anuta  
Margaret Archibald  
Alex and Nancy Ariniello  
Robert Arnold  
Tom Aron  
Sandra Aschert  
Patrick Ashburn  
Evie Augustadt  
William Autrey  
Brenda and Bobby Avery  
Maria and Jesse Aweida  
Dora and Raymond Babcock  
Kaye Bache-Snyder and  
Howard A. Snyder  
Nancy J. Bachus  
Bennie and Jannette Balke  
Gwendolyn Ball  
Richard H. Ball  
Mary and Jay Balzer  
Effie and Lloyd Banta  
Robert M. Banta  
Paula Bara  
Donna Barela  
Steven and Lynne Barnett  
Louise and Charles Barth

Albert Bartlett  
Debra Baskett  
Clara Baughman  
Sam and Hilda Baum  
Heather Beadle  
Chauncey and Nancy Beagle  
Margaret Bean  
Mildred Beavers  
David Becher  
Ingrid and Harold Becher  
Bradford and Peg Beeler  
Sara J. Beery  
Joseph Levine and Ruth S.  
Beiersdorf  
Stephen Bendit  
William and Jeanne Bensema  
Gloria and Jorge Bensus  
Nancy and William Berry  
James Berryhill  
Ray Bertrand  
Mary Ann Best  
Louise and Martin Bickman  
Kreighton Bieger  
June Bills  
Suzanne and Peter Birkeland  
Harriet and Willard Bissell  
David Black  
Tim Black  
Timothy and Mary Black  
Herbert Blacker  
Marie and Howard Blaney  
John and Carolyn Bliley  
Mary K. Blue and Tom Cobb  
Joseph and Ann Boberschmidt  
Janis Bohan  
Patricia Booton  
Lynn and Mary Bopp  
Helen Bosley  
Barbara Bowman  
Sandy and Sally Bracken  
Barbara Bradt-Ryan and  
Victor Ryan  
David Brandon  
Catherine and Stephen  
Breeding  
Charles and Gertrude  
Brendecke  
Janet Brennan  
Joan Brett  
David and Mary Brighton  
Ellen Brock  
Robert Brockish

Shirley and Eric Brod  
Betty Brooks  
Catherine Brown  
Don and Karen Brown  
Teresa and Gerardo Brucker  
Frank and Shelly Bruno  
Elliot and Anne Bugbee  
Lorna Buhse  
Dick Bulinski  
Ruth Burlingame  
Bradford and Peg Beeler  
Maxine Busch  
Mari Bush  
Barbara Buttenfield  
Stephen Bendit  
Assunta and Salvatore  
Campagna  
Joan Campbell  
Ann Capodanno  
Nancy and Christian Cares  
Carolyn Carlat  
Whitney C. Carman and  
Nada Diachenko  
Steve and Barbara Carnes  
Alexander Carver  
Delphine and Joseph Casey  
Ramona Castillo  
Barbara Caven  
Jeanette A. Chadwick  
Rachel Chaney  
Lois Chapman  
Katherine Chennaux  
Michael and Mary Cherochak  
Jim and Susan Chrisman  
Andrew Clark and Mary Cobb  
Noel and Pauline Clark  
Benny Classetti  
Margaret E. Cleary  
George and Anna Bell  
Clements  
Richard Coble  
Sharon Cole  
Sean Coleman  
James and Claudia Colwell  
Diane Compton  
Esther Concha and Eric Zarate  
Susan Connelly  
Shirley and Tom Conquest  
Evelyn W. Cooper  
Mary Copeland  
Sue Corbett  
Stacy and Paul Cornay  
Christine and David Correa

Jane Cowdin  
Helen and Edward Craven  
Eva L. Croluis  
Raymond and Jean Crowder  
Constance Crump  
Anita Cumalat  
Meri and Joe Cunningham  
Carolyn Cutler  
Forrest and Alice Dalton  
Steven L. Daum  
Elaine Davidson  
Linda and Ian Davies  
Mary and Tom Deany  
Diana and Joseph DeBrohun  
Alice R. Defler and  
Jennifer McKeown  
Carol Delker  
Dee Delman  
Nancy Deluigi  
Helen and Sherdon Denny  
Mark and Kati Detsky  
Laura and Wayne Dickinson  
Linda and Don Diebert  
Robert and Ilabell Dike  
Ronald Dobbins  
Robert and Renee Dobransky  
Barbara Dolder  
Theresa Doucet  
Caroline and Preston Douglas  
Kenneth Dubach  
Rosemarie Duemig  
Jeanne Duffy Meyers  
Fran Dugan  
Helen Duhon  
Patricia Dunn  
Renee Durland  
Anton and Jeanne Dworak  
Dixie and Al Dworak  
Carol Dwyer  
Luis and Ursula Eades  
Violet Ebeid  
Janet Eden-Harris and  
Paul Harris  
James and Marilyn Edsall  
Elizabeth and Carson Edwards  
Johanna Egan  
Paul Eklund  
David Ellison  
Clara Emerich  
Shelley Emerick  
Linda and Lawrence Emsing  
Marian Engel

William and Judy Erfling  
Twig Ertl  
Lenora and Dennis Etchells  
John Evans  
Mary Jean and Peter Ewing  
Kay Faklis and Poppi Good  
Marianne and William Farnum  
Mary Ann and John Farrington  
Mary Faulkner  
T. Eleanor Fenton  
Charles Fichman  
Dorothy Field  
Lee Fife  
Jeanine Figur  
Richard and Alyssa Finer  
Betty Fischer  
Richard J. Fisher and  
Karri A. Kent  
Margaret Fitzgibbons and  
Thomas Daly  
Mary Ellen and Marvin Floyd  
Lynne Foley  
June Follett  
Don and Judy Forkner  
Doris W. Foster  
Terry Franchini-Hinkelman  
Catherine Frank  
Andrew and Audrey Franklin  
Charles Freedman and  
Mary King  
Donald Frey  
Marianne Friedman  
Kathryn Friend  
Richard and Judy Fritz  
Doug and Marge Fuhr  
Marilyn Furman  
Irma Galusha and  
Robert Harrington  
Tess Gardetto  
Ann Garstang  
John and Marilyn Gary  
Ron and Deborah Geary  
Steven and Susan Gebert  
Rachel and David Gehr  
Mary Gelman  
Rosaline Gerhardt  
Carol Gerlitz  
George and Linda Gerstle  
Theresa Gerung  
John and Lynn Gibert  
Thomas Giddings  
Priscilla Gifford

Burton and Mona Gillan  
Lesley and Thomas Gillis  
John and Karen Gintert  
Charlena Glover  
Paulina H. Goei  
Issa Goharjou  
Dr. Melvyn Golden  
Toshen Golias  
Janet and Eugene Gollin  
Julie Gonzales  
Michael and Anita Gonzales  
Jeannette Gonzalez  
Jean Gore  
Harry E. Goresline  
Eleanor Gradziel  
Marcelee Gralapp  
Gustavo and Susan Grampp  
Carolyn J. Grant and  
Robert Krenz  
Doris Gray  
Menucha Greenberg

Jane W. Greenfield and  
James Pettit  
Helen Greschler  
Frank O. Gunter  
Robert Guokas  
Roger and Judith Guzman  
Frank and Elizabeth Hagan  
Jeanie Hale  
Edward Hall  
Susan and Clark Hamilton  
Charles and Colleen Hamm  
Betty Hammond  
Earl and Barbara Hancock  
Kurt W. Hans  
Kent and Cathy Hansen  
Marianne Hansen  
Deborah and Mark Hardgrave  
Marynell Hardin  
Phyllis Hardin  
Ronald and Connie Harmon  
Jean and Herbert Harris  
Richard and Catherine Harris

Burgette Hart  
Judy and James Hartley  
Dale and Alice Harvey  
Mike Hassel  
Margaret Hauck  
Larry and Ruth Hause  
Bette and Earl Hauserman  
Carole and David Hawkes  
Thelma Haydon  
Deborah Hayes  
Mary and Richard Hayward  
Jack Heard and Linda Kennoy  
Josie Heath  
Cathy Heckel  
Natalie L. Hedberg and  
Thomas E. Vanzandt  
Nancy Ann Hedl  
Judy and James Heinze  
Ray and Jeannine Henderson  
Ruth and Bruce Henderson  
Stanley and Miriam  
Hendrickson

Carl and Judy Herbet  
Rebecca and Thomas Herman  
Betty Herring  
Minna Hewes  
Altrus Hill  
Boyd and Alette Hill  
David and Myhra Hill  
Diane and James Hill  
Leo Hill  
Sharlene Hill  
William and Mary Hill  
Ruben and Erma Hirning  
Jean and Jack Hodges  
Geraldine Hogsett  
Mark B. Holdbrooks  
John T. Hollin  
Leona and Robert Holub  
Thomas and Catherine Holzer  
Herbert and Barbara Hoover  
Suzanne and David Hoover  
John and Vivian Hopkins

Joyce and Ken Horner  
Freda Hoskin  
James Hudson and  
Kathy Davidson  
Jerri Huggins  
Fred Hull  
Robert and Eileen Hunnes  
Connie Hurlburt  
Phyllis J. Hurlburt  
Donna C. Hurley and  
Gene Hilton  
Sylvia Hutchinson  
Jessie and Thomas Inglefield  
David and Karin Jackson  
Arnold and Victoria Jacobson  
Jo Jacobson  
Betty L. Jacques  
Betty Jahn  
Genevieve Jeffers  
Stephen Jerritts  
Michael Johan  
Hillary and Eric Johnson

Marie Johnson  
Sam Johnson and  
Teresa Ingram  
Elizabeth and Dennis Jones  
Thelma M. Jones  
Eileen Jonikas  
Dottie and Ray Joyce  
Anne W. Judson  
Diana and Kenneth Kahn  
Journet D. Kahn  
Sandra Kail  
Phyllis A. Kaplan and  
Stewart E. Guthrie  
Linda and James Karagas  
Charles and Katherine  
Keim  
Edward Kellenberger  
William and Ann Kellogg  
Alan and Joanne Kelly  
Paul Kelly  
Mary Kenny  
Hamida Khanum

Mary Sue Kiker  
Marie Kindgren  
Stuart and Lauren Kingsbery  
June J. Kinney  
Brenda and Thomas Kirk  
Beth Kiteley  
Timothy and Deborah Kitt  
Gary Klein  
Phyllis Klein  
Joseph and Marjorie Klemp  
Courtney and Joseph  
Klingensmith  
Daniel and Pamela  
Knollenberg  
Helen Kobobel  
Otto F. Koch  
Robert and Laura Koecheler  
Gail and Gerhard Koepf  
Jackie Koldeway  
Herta Koogler  
Sally Kornblith

Lenna and Jon Kottke  
Eleanor Kramer  
Bruce Kranzberg and  
Cathy Sacco  
Frank and Marion Kreith  
Lanelle Krueger  
Venita Kruse  
Judy and Joseph Kurtz  
Stanley and Holly Kyed  
Eve Lacey  
Farzin and Shirley Lalezari  
Marjorie M. Lane  
Ann and Gerhard Langer  
Larry and Llyn Lankford  
Joyce Larsen  
Anne Larson  
Mariann Lastoka  
Frank P. Latino, Jr.  
Nancy Laverty  
Janice and Daniel Law

“A heartfelt thanks.”





Jon Lawley  
Lee and Elaine Lawson  
Margaret A. Le Mone and  
Peter Gilman  
Sherry Leach  
Stella Lee  
Edward and Connie Lehman  
Harold and Joan Leinbach  
Mary and David Leonard  
Karen and Jeff Levi  
Daphne Lewin  
Kathleen Lewis  
Clara Li  
Elizabeth Lipstreu  
Diana and Richard Lirtzman  
Patricia and Robert Lisensky  
Susan Litt  
David and Ceclea Little  
Kevin Littmann  
Eleanor Livingston  
Kathleen Lloyd  
Leslie Lomas  
Joanne Long

Barbara C. Martin  
John Martin  
Mary Jean Martin  
Joan and Steven Martindale  
Martha Mason  
Bob and Ester Matheson  
Wayne and Dorothy Mattive  
Lawrence Maurer  
Rodney and Imogene Maxon  
George S. Maxwell and Mary Tully  
Mary May  
Teresa S. Mayes  
Mona McCarthy  
Sandra McCarthy  
Sharon L. McClew and  
Rich Wildau  
Janet McCowan  
Priscilla McCutcheon  
Kevin McDowell  
Thomas and Jo McGrath  
Cintra McIlwain and  
Warren Gillette  
Doris and Peter McManamon

Kay Morgan  
William Morris  
Kathy S. Morrow  
Lisa Morzel  
Willa Mues  
Beverly and Stuart Mundt  
Bill Munson  
Marcella and Robert Munson  
Margie L. Murray  
Suzan and Michael Myers  
Ann B. Mygatt  
Paul Nachtrab  
Dottie Neal  
Virginia Negrete  
Tom Nelson  
Richard and Carol Neslund  
Margi Ness  
Ed and Marcella Neumann  
John and Joyce Neville  
Basil and Carol Nicolaidis  
Catherine and Peter Nielsen  
Mildred Nilon  
Judy and Denis Nock

Imadail Pearson  
James and Marilyn Pedersen  
Paul and Mary Pelanek  
Philip E. Penningroth and  
Stacy Arnett  
Rose A. Perechinsky  
Robert Perkins  
Edith Permut  
Phyllis Perreault  
Dee Perry  
Hazel Perry  
Beverly and George Peters  
Mary Ann Peters  
Jana and Christopher Petersen  
Edgar and Mona Pfohl  
Kathleen Phillips  
Lanny and Carmen Pinchuk  
Gerald and Marilyn Pinsker  
Rich Pinto  
Herbert Plews  
Victor and Natalie Pollak  
Robert Powell  
Karen Prater

Eva Reid  
David Renne  
Mary and Fred Resh  
Jean J. Reuther  
Silvia Reyes-Valdez and  
Jose Luis Sandoval  
Wendy and Jon Reynolds  
Walter Richards  
Clyde Richey  
Russell Ricker  
Kathy Rinehart  
Ann Ripley  
Ralph and Marlene Ritter  
Virginia Robbins  
Tula and Kenneth Roberge  
Robert and Bonita Robertson  
Margie Robinson  
Bill Roettker  
Marjorie Rogers  
Robert and Diane Roggow  
Robert and Susan Rosenthal  
Eric A. Roth and Vicki Teideman  
Glenn Rowley

William and Carol Scolari  
Anna and Paul Scott  
Brenda Seaborn  
Vivian and Richard Seale  
Beverly Sears  
Charlotte Shatz  
Dean and Betty Shaw  
Brenda Shea and  
Catherine Griffith  
Guy and Pamela Sheets  
Eunice Shephard  
Carol Sheppard  
Delores Shikles  
Michael and Gail Shimmin  
Eleanor Shulls  
John Sidwell  
Jetta and Barry Siegel  
Nancy Simon  
Rachel Simon  
Andrew J. Simpson and  
Wendy Eder  
Ajaz and Ruhi Siraj  
Sandy Sisneros  
Victor Skaggs  
B. Scot and Eileen Smith  
Diana and Lawrence Smith  
Gordon Smith  
Harold N. Smith  
Imogene Smith  
Jane Smith  
Jeanne Snyder

Victor and Claudia Solanyk  
Marie S. Sollod and  
Virginia Bruce  
Ethel D. Soppeland  
Barry and Diane Spath  
Janice Speas  
James and Marlyn Spelman  
Abigail Sperry  
Gene Stafford  
Dale and Judith Stamwitz  
Elizabeth Stephenson  
Ruth Stern  
Judith and Norton Steuben  
Zoe Ann and Paul Stivers  
Dorothy and William Stock  
Bernard and Leona Stoecker  
Maryann J. and  
Matthew A. Stokan  
Diane Stow  
Gloria Strandlund  
Earl E. Stratton  
Margaret and Richard Strauch  
Lynn A. Streeter and  
Thomas Landauer  
Jan Stuart  
Diane Sullivan  
Corbett Summers  
Patricia and Gilbert Summers  
Sam and Cheryl Sussman  
Jon and Catherine Swanson  
Mr. Richard Swiderski  
Tim and Patti Swope  
William and Lillian Taggart  
Laurie Tamm

Steven and Barbara Taniguchi  
Ellen Tate  
Gail A. Tate  
Avlona and Douglas Taylor  
Gene Taylor  
Norman Taylor  
Walter Taylor  
Sharon and Terry Terranova  
Susan Thayer  
Edward and Mary Theiss  
Kristine Theriault  
Bertha Thomas  
Marianne and David Thomas  
Suzanne Thomas and  
Steven Stone  
Hope Thompson  
Joann Thompson  
Mack Thompson  
Mary Thompson  
Richard and Hazel Thornley  
Joyce Thurmer  
Dr. Marion C. Thurnauer and  
Alexander D. Trifunac  
Bob Timm  
Evelyn Tjarks  
Lorraine Todd  
Norman Todd  
Edith Toliver  
Mary and Parker Tracy  
Mary Trembour  
Robert C. Tripp  
Jeffrey Truesdall and  
Reesa Porter  
Thomas H. Trumble  
Steven P. Turley

Karen Utlej  
Ventura Valdovinos  
Richard and Elizabeth Valent  
Margaret and Joseph  
Van Andel  
Maureen Van Camp  
Martha Van Der Mersch and  
Joseph S. Schlotthauer  
Betty Van Zandt  
Ruth E. VanZuiden  
Elena Vasiliu  
Edward and Mary Ellen Vejvoda  
Velta Velme  
Betty Vesta  
Catharine Vorhaus  
Fred and Molly Wagner  
Gretchen and John Wahl  
William and Joanne Waite  
Amanda Walker  
Genevieve Walker  
Jean Walker  
Simeon and Janis Walker  
Alice Wallace  
Regis Walters  
Raymond Warn  
Jan Warren  
Janet Watts  
Karen and Philip Weber  
Claude M. Weil and  
Carole Coates  
Grace Wells  
Richard R. Welty  
Shirley Wergin  
Irene Wessell

Robert S. West  
Lisa G. Wetterstrom  
Norman Wettlauffer  
Nancy T. Whetstone  
Norma White  
Phyllis and Roy Whyman  
Nancy W. Wigington  
Grant and Carol Wilcox  
Teresa Wilkens  
Virginia Wilkinson  
Jane Willert  
Ann Williams  
Arnold and Millie Williams  
Gretchen and Richard Williams  
Steffi E. Williams  
Elizabeth Williamson  
Jack Wolfe  
William Wood  
Audrey Woods  
Elyce Woolf  
Jackie Wright  
Ruth Wright  
Michael Yanowitch  
Margaret Young  
Matt and Deanna Young  
Norma Young  
Wendy Zalcborg  
Sylvia Zavarella  
Carol Zelzer  
Yanzeng Zhao  
Daniel and Pat Ziemkowski  
Arthur Zirger

# “Your contribution changes lives.”

James Longley  
Susan S. Loo and Larry Donner  
Sandra L. Love  
Susan and Allan Love  
Janet Lowery  
Marty Lyman  
Bruce MacKenzie  
Fay Magee  
K.T. and Prameela Mahanthappa  
Gloria Main  
Caroline Malde  
Jerome and Susan Malitz  
Margaretha Maloney and  
Robert Palaich  
John and Nancy Malville  
Rima Manas  
Anna and John Mandis  
Bill Mandry  
Clyde and Rosa Manning  
Thurston Manning  
Charles and Barbara Margolf  
John Marottek  
Ruby Marr

Gerald and Patricia McNutt  
Peter and Alex McNutt  
Glennys McPhiliomy  
Aya Medrud  
Janet L. Meinhold  
Stephen and Terri Melville  
Lise Menn  
Susan Merwin  
Jean Messimer  
Sara and Josef Michl  
Patti and David Micklin  
Beverly A. Middleton-Johnson  
Gisela Miller  
Ruth Miller  
S. J. Miller  
Shirley and Glenn Miller  
Winona Miller  
David and Marlys Millhiser  
Albert and Floretta Mitz  
Jere and Bruce Mock  
Rolf Monge  
Valorie Mooney  
Axson Morgan

Thomas Norton  
Donella Novak  
George and Patricia Nytes  
Jeanne O'Donnell  
Glenn and Dorothy Oliver  
Jane Olson  
Lise Menn  
Phyllis Olson  
Suzanne O'Neill  
Florina Opran  
Eulalia Ortega  
Gail L. Osterbur and  
Gordon Kost  
Laurence Paddock  
Allison Palmer  
Marilyn Palmer  
June Paquette  
Linda and Christopher Paris  
Peter Park  
Dave Parsons  
Julia Pastorino  
Jane Patrick and Barry Schacht  
John Payne  
Wade and Elizabeth Payne

Rosemary and Douglas Prato  
Mary Prescott  
Kati Pressman  
John and Mary Price  
Connie Pringle  
Andrew B. Proctor and  
Jill M. Reisdorf  
Edward Putzier  
Dale Quakenbush  
Margaret Quiatt  
Cheryl and Ronald Rains  
Jack D. Ramaley  
Alice Ramstetter  
Alice Ranney  
Richard Rasnek  
Elaine Ray  
Susan Ray  
Dorothy Read  
Marion D. Read  
Muriel and Jeff Reaves  
James Reed  
Richard Reed  
Sharon and Dan Reese

Robert Rumfelt  
Ena Russell  
Barbara Sable  
Emilien Sablo  
John and Rebecca Saccardi  
Richard and Anne Salberg  
Earl Sampson  
Winnie Sanders  
Garry Sanfaçon  
Donald and Lavon Saunders  
Carolyn Schauble  
Joan and Herman Schempp  
Peter and Paula Schild  
Mary Schlesinger  
Dorothy Schneider  
Robert and Barbara Schnurr  
Gloria J. Schoeneshoefer  
Gary and Lisa Schone  
William Schooleman  
Rita Schubert  
Rachel Schulman  
Annemarie Schutte  
Loren Sciaky



## Tributes

Mary and Jay Balzer,  
In honor of Allie Balzer  
Kreighton Bieger, In memory  
of Margaret Bieger  
Joan G. Campbell,  
In memory of Emma Campbell  
Sean Coleman, In honor of  
Judy and Jeremy Coleman  
Teresa S. Mayes,  
In memory of Dee Demmon  
Susan and Jim Chrisman,  
In memory of Pamela Sekaros  
Bob Timm,  
In honor of Cathy Timm

## Organizations

1040 Foundation  
AARP Colorado  
Amgen Foundation  
Avista Adventist Hospital  
The Ball Foundation  
Beverly Foundation  
Black Roofing  
BNSF Foundation  
Boulder County Area  
Agency on Aging  
Caplan and Earnest LLC  
The Carillon at Boulder Creek  
Collins Foundation Trust  
Colorado Business Bank  
Colorado State Bank and Trust  
Community First Foundation  
Community Foundation of  
Northern Colorado  
Community Foundation  
Serving Boulder County  
Daniels Fund  
The Denver Foundation  
DigitalGlobe, Inc.  
Estes Park Community  
Thrift Shop, Inc.  
Estes Park Rotary Foundation  
Fidelity Charitable  
First Presbyterian Church  
Foothills United Way  
Frasier Meadows  
Retirement Community  
Golden West  
IBM Employee Services Center  
James Hynd Trust  
Jared Polis Foundation

John G. Duncan Charitable Trust  
Kinney Memorial Foundation  
Ladies of the Elks  
Larry H. Miller Toyota Boulder  
Law Offices of  
Kottke & Brantz, LLC  
Lockton Companies of  
Colorado, Inc.  
Longmont Community  
Foundation  
Longmont Florist  
Longmont United Hospital  
Louis P. Singer Fund  
Lyons Gaddis Kahn & Hall  
Margaret A. Cargill Foundation  
OZ Architecture  
PASCO-Personal Assistance  
Services of Colorado  
Platte Valley Medical Center  
Quota International  
Regional Transportation District  
Renaissance Charitable  
Foundation Inc.  
Rose Community Foundation  
RouteMatch Software  
Royal Neighbors of America  
Sargent Bickham & Lagudis  
Summit Bank & Trust  
Tebo Development Company  
Transit Plus  
United Way of Larimer County  
Vehicles for Charity-  
ARC Thrift Stores  
Wal-Mart Stores Foundation  
Wells Fargo Bank  
Western Disposal Services  
Wright Family Foundation

## The Climb

Anonymous (8)  
Marie J. Brookhart  
Kathleen and Peter Carbone  
Juliet Carpenter  
Rudolph J. Dichtl  
Dave Dickson  
Rick and Ann Geesaman  
Gold Hill Club  
Peter Ketels  
Martha Knapp  
Kathrin Kulpa  
Howard and Marjory Lambert

Ann D. Lawrence  
Luzie and Bob Mason  
Patricia McQuown  
Mind Body Health Sciences, LLC  
PreRace, LLC  
Larry Rasmussen  
Thelma M. Robinson  
Mary C. Ryan  
Antoinette Shaller  
Alice and Karel Starek  
Ernest Stiltner  
Lynne Y. Walter  
Joseph and Sandra Weaver

## In-Kind Donors

50 Plus Marketplace News  
Marcus Berggren  
Boulder Blooms  
Boulder Philharmonic  
Orchestra & Academy  
Breadworks  
Brock Media/Boulder Magazine  
Carl's Jr.  
Century Casino  
Chili's  
Efrain's  
Estey Printing Company  
Forrest Fleming  
The Gilpin Casino  
Good Times  
Stephanie A. Grainger  
Hotel Boulderado  
Instant Imprints  
Isle Casino & Hotel  
Jesters Dinner Theatre  
KGNU  
King Sooper's  
Lenna and Jon Kottke  
Le Peep  
Left Hand Brewing Company  
Lindsay's Deli  
The Lodge Casino  
Millie's Restaurant/Easy  
Street Casino  
Pasta Jay's  
Prairie Mountain Publishing  
Renegade Brewery  
Reserve Casino & Hotel  
RouteMatch Software  
Rumbi Island Grill  
Smashburger

## Federal Grants

Title III/Older Americans Act  
FTA Section 5311  
FTA Section 5317 New Freedom

## Capital Gifts

Encana Oil & Gas (USA) Inc.  
Adams County Community  
Development Block Grant  
FTA Section 5310

Sonic  
Spruce Confections Bakery  
& Cafe  
Sunflower Farmer's Market  
Super Target  
Ten20 Salon  
Theater Company of Lafayette  
Tokyo Joe's  
Turley's  
Twenty Ninth Street  
Vermilion  
Via Toscana  
Vitamin Cottage  
Wild Card Saloon & Casino  
Yellow Scene Magazine

## Endowment Gifts

Joan Campbell  
Anton and Jeanne Dworak  
Lenna and Jon Kottke

## Local Governments

Adams County  
Araphae County  
Boulder County  
City of Boulder  
City of Lafayette  
City of Longmont  
City of Louisville  
Town of Bennett  
Town of Brighton  
Town of Erie  
Town of Estes Park  
Town of Lyons  
Town of Superior

## The Ride of Your Life Capital Campaign

Irene Ahrens  
Jane and Richard Barker  
Gary D. Berg and  
Karen McMurry  
Boulder Rotary Club  
Alice Mae Bowen  
Don and Karen Brown  
Frank and Shelly Bruno  
Esther Concha and Eric Zarate  
Max and Barbara Coppom  
Stacy and Paul Cornay  
Jim and Sandra Jo Fitzgerald  
Andrew and Audrey Franklin  
Rebecca and Thomas Herman  
Suzanne and David Hoover  
Longmont United Hospital  
Richard and Donna Meckley  
Bill Munson  
Jana and Christopher Petersen  
Denise Richert  
Teresa Rivas  
Ann Roecker  
Jon and Catherine Swanson  
James Trahan  
Paul Turley  
John Wittemyer  
Ming Ying Zhou

And a heartfelt thanks to all  
the Young@Heart patrons  
who bought tickets through  
Chautauqua.

The individuals and organizations  
listed made contributions to Via  
between January 1, 2012 and  
December 31, 2012.

We have made every effort to  
produce accurate lists. If we  
have misspelled or inadvertently  
omitted a name, please  
accept our apologies. Call  
the Development Office with  
corrections at 303.473.2883.

Via is a private, nonprofit  
organization.

©2013 Via Mobility Services

## CU prof remembered as an icon.

### A letter to the Editor

The Daily Camera's March 13 article on Hobart Smith brought fond memories to all of us at Via, as well as confirmation about our mission and purpose in the community. Mr. Smith, a CU professor and widely recognized as the most prolifically published herpetologist, passed away at the age of 100 in early March.

Via was a daily part of Hobart's life. He was passionate about his work and continued to go to his university office long after he retired, with our help. He was no longer able to drive but with Via, Hobart could continue his studies, research, and paper writing, until he was physically no longer able to do so. He often told us that Via's paratransit services were the only way he could keep his connection with the campus and that connection made his life worth living. While he made tremendous contributions to his field, we were a small contribution to his life. We have a great photo of him, with his large, oversized glasses and baseball cap on, with a snake embroidered on it, of course.

We age by nature. We age well by foresight, preparation and creativity. Setting new challenges, looking forward instead of back and giving back to the community all promote lifelong renewal. People who age well are connected to a broader community—a community that welcomes, embraces, appreciates and enlivens the spirit of all of its members, including older adults. Hobart Smith certainly exhibited a human being who aged well. We were honored to be a part of his life and help him keep the connections that, to him, were so important.

## Via Management Staff

**Lenna Kottke**  
Executive Director

**Steve Blacksher and Jon Swanson**  
Co-Directors of Customer and  
Community Services, *retired*

**Rich Burns**  
Director of Operations

**Nicole Cavalino**  
Director of Customer and  
Community Services

**Mary Cobb**  
Director of Communications

**Tonya Fodness**  
Director of Human Resources

**Patti Micklin**  
Director of Development

**Alex Salvo**  
IT Manager

**Sandy Sisneros**  
Director of Finance

